

Wesley United Methodist Preschool NEWSLETTER



APRIL / MAY 2018



IMPORTANT DATES

- May 21-25:** Last Week of School
- May 25:** All School Picnic, 11:00am
- May 28:** Memorial Day Holiday
- August 29:** Parents are notified of class placement and time for open house. *2018 Information is not provided prior to this date.*
- August 31:** Open houses
- September 4:** 2018-2019 Classes begin

SCHOOL PICNIC

On the last day of school, we have our annual Wesley School Picnic at Meadow Lane Park (Meadow Lane Park 400 Courthouse Rd SW)

School will dismiss at 11:00. Each child must have an adult watching them. Please bring your own picnic for your family. Your whole family is welcome to join in! We have reserved the picnic shelter at Meadowlane, and the WWPC will have popsicles to share!



GOOD NEWS!

- We still have spots available for the upcoming school year (2018-2019). Please share the good news about Wesley with your friends and neighbors.
- 2018-2019 School Year Calendar is now available on our website.
- The preschool recently signed a contract with a landscaping company to improve the garden bed adjacent to the school entrance. We are excited about our fresh look!



WEEKDAY PARENT COMMITTEE (WWPC) MEMBERS:

- Chairperson:** Nicole McGarrigal
- Secretary:** Elizabeth Lucca
- Teacher Appreciation:** Mary Gaffney
Hilary Flynn
- Fundraising:** Krista Cunningham
Taylor Ritter
- Events:** Katie Charnoff
Susie Martonik
- Teddy Bear Parking:** Rose Sirianni
- Newsletter:** Andrea Hager





GOOD TO KNOW



TEDDY BEAR PARKING

Thanks to all of our volunteers and the Wesley staff that have made this program possible during these cold winter months! We have had great participation from our parents.

Volunteers are what make this possible!

We are using signup genius to coordinate volunteer times. If you would be willing to volunteer your time, please sign up using the signup genius link:

<http://www.signupgenius.com/go/409044facad29a13-teddy3>

The time commitment is minimal, 15-20 minutes 3 to 4 times a month. Before becoming a volunteer, our insurance policy requires that a background check is completed. Forms are available in the preschool office. If you have any questions, contact Wesley TBP:

wesleyumtbp@gmail.com

Please note:

- The six designated spots marked with orange cones are reserved for TBP.
- Remember to turn OFF your vehicle when leaving your car.
- Child must be strapped in car seat.
- There is no TBP offered during pick-up after Lunch Bunch.

WWPC NEEDS YOU!

We would love to see you become a part of the community by helping the WWPC continue to make Wesley a great place. There are many open positions for next year!

Who we are: The WWPC is a group of parents that work with the preschool staff, the church, and the parents to develop a community. Our goal is to serve the preschool by enriching the school experience for the students, parents, and staff.

What we do: Our group is comprised of many committees that strive to help make Wesley a fun and friendly place for all its families. Some of the great things our committees are responsible for are Fundraising, Teacher Appreciation, Events, Teddy Bear Parking, and our Room Parents.

How we do it: We meet monthly as a group during school hours for about 20 minutes to plan and discuss upcoming events. The meetings are informal and children of members who are not in school on meeting days are welcome. Each committee then carries out its duties with support from the entire team and other parent volunteers as needed.

We need you: Each year WWPC says farewell to devoted members as their children graduate from Wesley. We need your help to continue to carry on the work of the WWPC.

How to get involved: If you are interested in helping the WWPC for the 2018-2019 school year, please contact Laura Hoing. Someone from the WWPC will then be in contact with you about all the exciting opportunities available for next year.

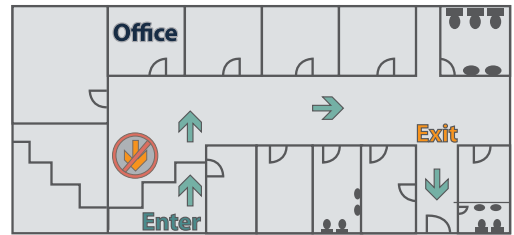


SAFETY REMINDERS

INDOOR TRAFFIC FLOW

After you have picked up or dropped off your child, please follow the signs and exit the building near Room 112 (near the Science classroom). Following the flow will minimize traffic jams that occur when people enter and exit the building simultaneously through the front door.

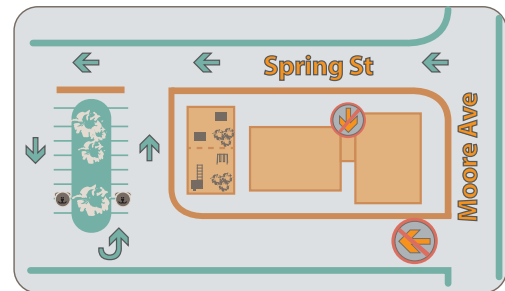
Please remind other caregivers to follow the traffic flow.



PARKING GUIDELINES

Please follow these parking procedures:

1. Enter the lower parking area from Spring St; not from Moore Ave, SE.
2. Park in one of the three lower parking lots.
3. Do not park adjacent to the playground.
4. Drive slowly in the neighborhood.
5. Only park on the church side of Spring St.
6. Do not block driveways of neighbors.



With high levels of traffic near the preschool, drivers must use extreme caution to ensure the safety of others. Cars must be turned off when unattended. Infants and children may not be left alone in cars, except when using Teddy Bear Parking. Children must hold the hand of an adult until they reach the classroom.

SNACK POLICY: FOOD ALLERGIES

At Wesley Preschool we want all parents to feel comfortable sending their little ones. Daily snack is provided by preschool and, due to some severe allergies, **all peanut products are banned**. Parents of children with food allergies where medication and/or an epi-pen is prescribed must provide their child's snack on a daily basis, no exceptions.

Parents are welcome to provide a special snack for the class. It has to be arranged with the teacher. It should be a store-bought snack in original packaging. The Director will check the label to ensure safety.

We discourage small snacks, such as popcorn and grapes, they may be a choking hazard. Party favors are not to be brought to the preschool.

Also, if you give your child food before or after school, please don't bring it into the playground to avoid putting at risk children who have food allergies. Additionally, picnics and trash attract animals. Feel free to enjoy your snack or lunch at the picnic tables in Paige's garden (where you exit) or on the grounds outside the playground. All school grounds and buildings are nut/peanut free and it is requested that parents refrain from bringing food that contain nuts or peanuts.

PLAYGROUND SAFETY GUIDELINES

The following are rules we ask parents and teachers to enforce at Wesley playground:

- Use of the playground is limited to preschool children during school hours:
 - *Tuesday and Friday 9am-noon*
 - *Monday, Wednesday and Thursday 9am-1pm*
- In the morning, parents and siblings should leave the playground area as the teachers whose classes start on the playground arrive there to greet their students.
- At the end of the day, parents and siblings should wait until the supervising teachers have dismissed all children before entering the playground.
- Please use the gates to enter and exit.
- An adult should always accompany any child.
- Please encourage the children to leave the gravel, sticks and other debris on the ground. The buckets and trucks are for digging and playing on the ground; they should not be carried onto play structures.
- Food and drinks are not permitted on the playground.
- No pets are permitted on school grounds.
- No crawling on top of the play equipment and structures.
- Children should enter the swing area "head on" so others already swinging can easily see them.

UPDATES FROM WESLEY UNITED METHODIST CHURCH



VACATION BIBLE SCHOOL 2018 - JUST A FEW SPOTS LEFT Visit wesleyvienna.org/vbs2018

June 25-29, 2018
9 am - 12 pm
Family Celebration Sunday, July 1

Registration is still open for at Wesley UMC's Vacation Bible School program (June 25-29, 9 am to 12 pm) at wesleyvienna.org/vbs2018 but is likely to close on or before May 11.

VBS is open to 4 year olds through 5th graders, and 6th graders and up are encouraged to participate as volunteers. Younger children of full-week volunteers are welcome to attend as well (age-appropriate childcare will be provided).

Please contact us at vbs@wesleyvienna.org with any questions or to volunteer. We also have a bulletin board in the Fellowship Hall displaying items we need donated or loaned and some projects that can be completed at home to help out!

SUNDAY SCHOOL AT WESLEY UMC

Sunday School for preschoolers through 5th graders is held at 11:00 am every Sunday, during our family worship service. All are welcome, no registration required!